

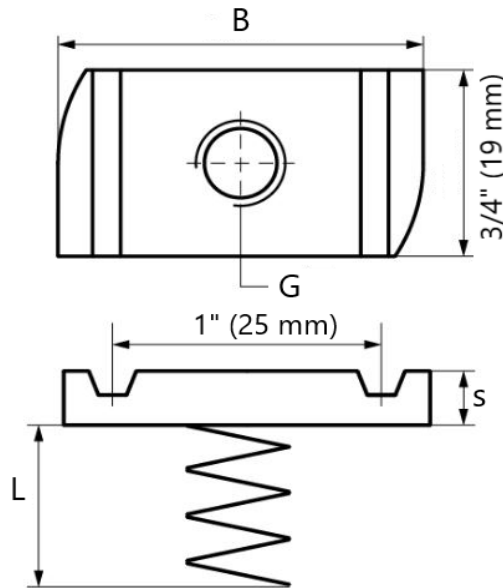
900RG STRUT NUT REGULAR SPRING

Finish Zinc Plated, Hot Dipped Galvanized

Material Carbon Steel, Stainless Steel 316SS

Recommended Used to secure fittings and accessories to strut channel

Note To be used on 1 5/8" Strut.



PART NUMBER	SPECIFICATION DATA							APP'X WT. PER 100 (LBS)	PC'S PER PKG.
	G	B (")	B (mm)	s (")	s (mm)	L (")	L (mm)		
900RG 1/4	1/4"	1 3/8	35	1/4	6	1 1/2	38	6	100
900RG 5/16	5/16"	1 3/8	35	3/8	9	1 1/2	38	6	100
900RG 3/8	3/8"	1 3/8	35	3/8	9	1 1/2	38	8	100
900RG 1/2	1/2"	1 3/8	35	3/8	9	1 1/2	38	10	100
900RG 5/8	5/8"	1 3/8	35	1/2	13	1 1/2	38	15.5	50
900RG 3/4	3/4"	1 3/8	35	1/2	13	1 1/2	38	14.5	50
900RG 7/8	7/8"	1 3/8	35	1/2	13	1 1/2	38	14	50
900RG M6	M6	1 5/16	34	3/16	5	1 5/16	34	10	100
900RG M8	M8	1 5/16	34	1/4	6	1 5/16	34	10	100
900RG M10	M10	1 5/16	34	5/16	8	1 5/16	34	10	100
900RG M12	M12	1 5/16	34	5/16	9	1 5/16	34	10	100

QWI 4.3.1 Issue Date Dec/23 Rev.2